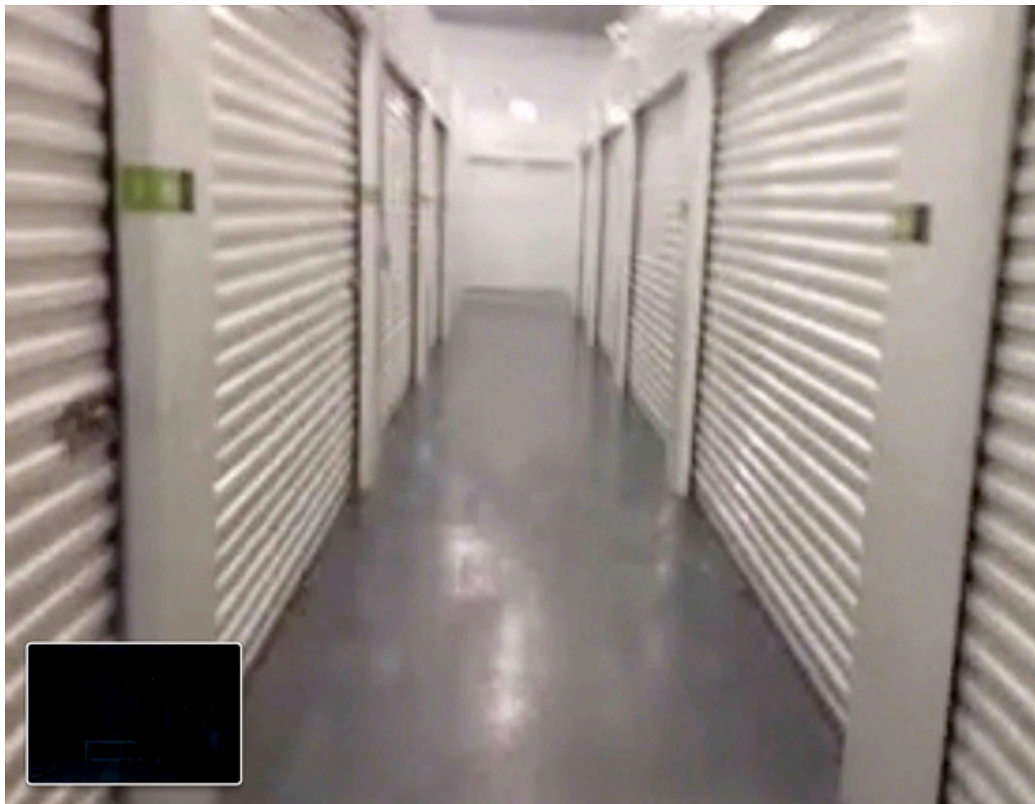
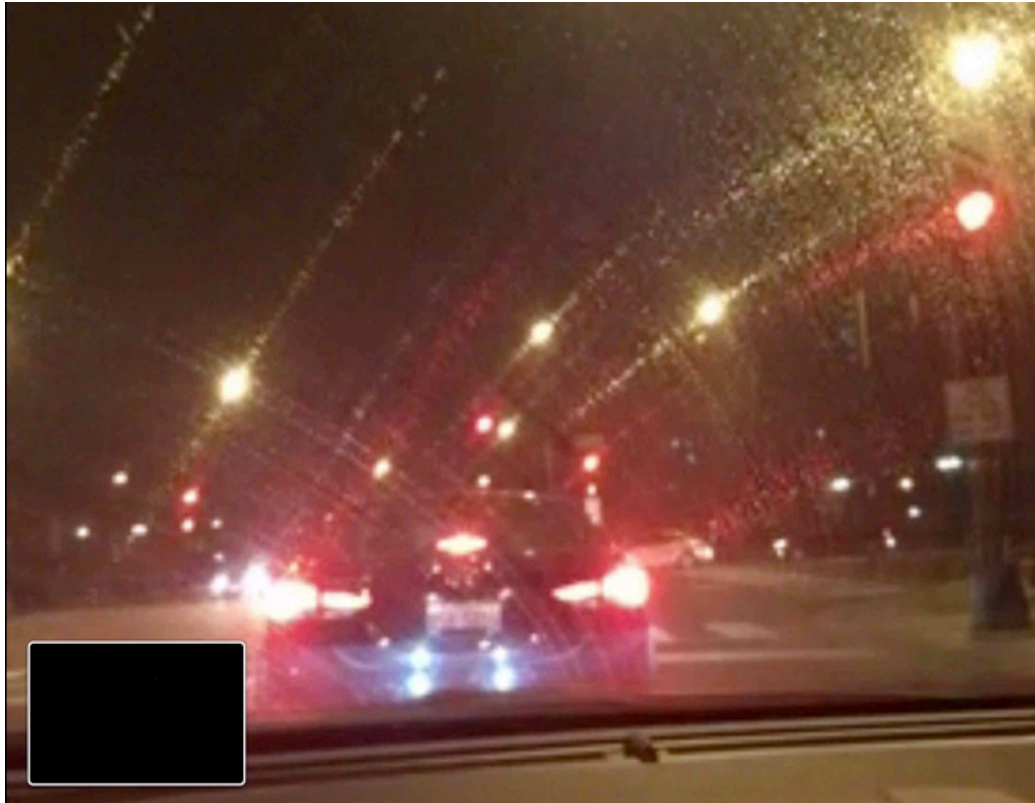


**Stephen Kwok**  
select works



### **Blue Island**

Performance-Installation

2015, 2017

*Blue Island* is a performance and resulting installation between two sites, a gallery and a storage facility, both situated along the Chicago CTA 60 Blue Island bus route. On the night of the exhibition opening, objects displayed in the gallery were removed and loaded into the trunk of a rental car. A video call was established between driver and audience. The ride along the route, accompanied by the soundtrack of a mixtape, was broadcast live to the gallery: a live cinema of traffic and street lights. It terminated at a storage unit, where the objects were unloaded and left for the month of the exhibition. Keys to the unit were distributed to the audience and encouraged to circulate freely.

View video documentation: [kwokstephen.com/blueisland.mp4](http://kwokstephen.com/blueisland.mp4)

(left)

Screenshots of the video call between driver and audience





**Blue Island**  
Performance-Installation

Objects left in the storage facility: publications of the artist's writing, bottled water, a chair, and a gym bag filled with trail mix

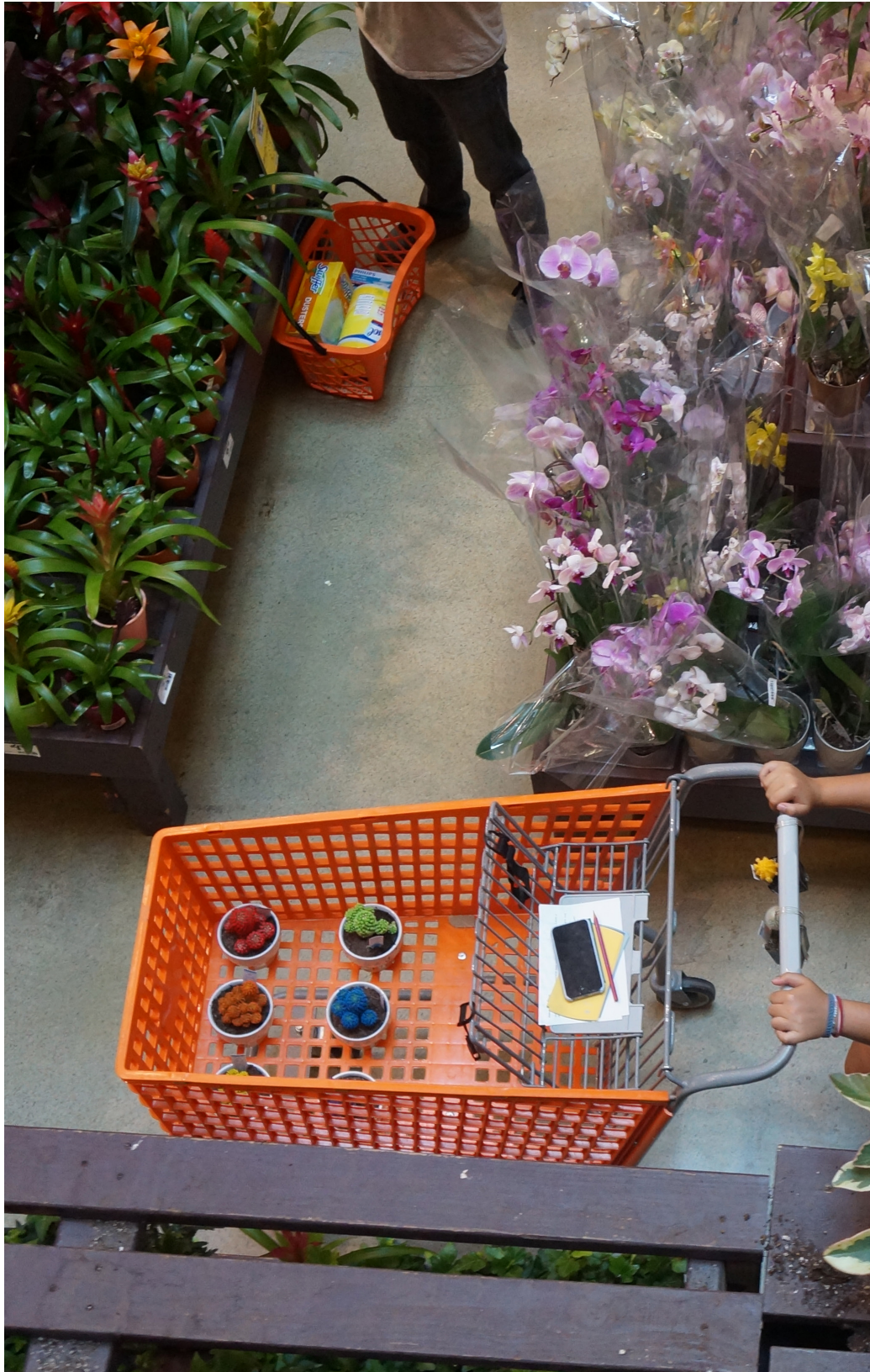




**Blue Island**  
Performance-Installation

A capture from a live feed of the storage unit in use



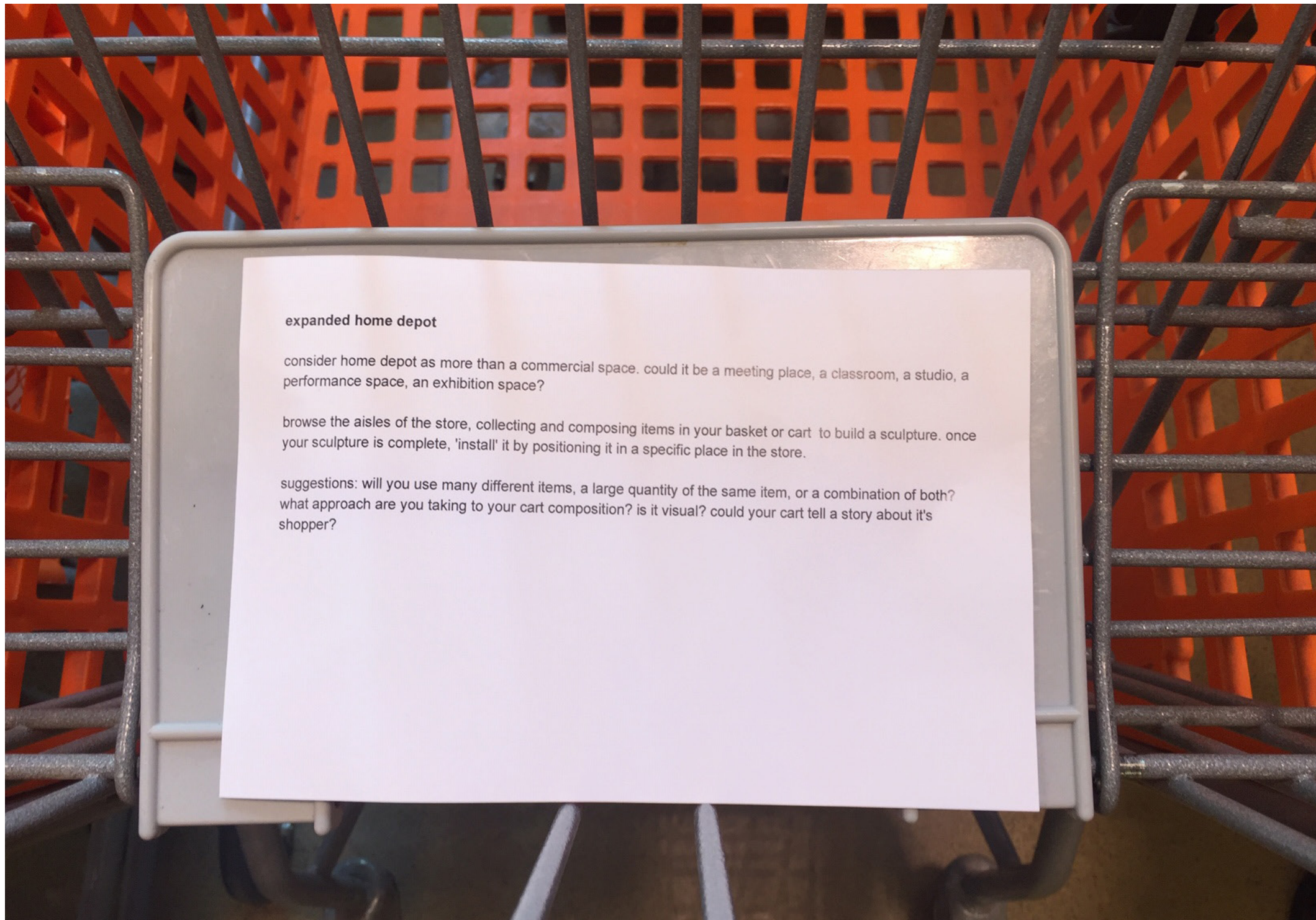


### Expanded Home Depot Workshop

*Expanded Home Depot* takes place at any local Home Depot store. participants of the workshop take cover as everyday shoppers, discreetly composing sculptural installations in their shopping carts as they browse the aisles of the store. Once finished, they leave their carts at a specific location and send the aisle and bin number to a group text. We then view these installations, navigating the store as a covertly embedded exhibition space.

(left)  
A participant performs as shopper





**expanded home depot**

consider home depot as more than a commercial space. could it be a meeting place, a classroom, a studio, a performance space, an exhibition space?

browse the aisles of the store, collecting and composing items in your basket or cart to build a sculpture. once your sculpture is complete, 'install' it by positioning it in a specific place in the store.

suggestions: will you use many different items, a large quantity of the same item, or a combination of both? what approach are you taking to your cart composition? is it visual? could your cart tell a story about it's shopper?

**Expanded Home Depot**  
Workshop

Guiding documents





Expanded Home Depot  
Workshop

Participant installation





### **Charger**

Performance-Installation

2013, 2016, 2017, 2020

In *Charger*, a group of runners are crouched in a starting block positions within a field of sprinklers. As the sprinklers mechanically spray water, the runners become soaked, but never break from their positions. They maintain their pose of anticipation. Within this elongated moment, *Charger* flickers between preparation and exhaustion, pleasure and labor, violence and care. View video documentation: [vimeo.com/86925473](https://vimeo.com/86925473)

(left)

2017 performance in Newburgh, New York featuring a local high school track team





**Charger**  
Performance-Installation

2020 performance, Seoul Museum of Art





**Charger**  
Performance-Installation

2016 performance in London





**CFGNY: Surface Trend, Choreography**

In collaboration with Kiyoto Koseki  
2019

CFGNY's Surface Trend show was held in Seward Park, Manhattan. According to a algorithm bound by 'maximum occupancy', models entered and exited groupings of 2 to 6, constantly forming and dissolving tableaux within the park. View video documentation: [http://www.cfgny.us/collections/surface\\_trend/](http://www.cfgny.us/collections/surface_trend/)

## CFGNY: Surface Trend

### Choreography

## Internal choreographic spreadsheet





### **Our Speed**

Event  
2018

*Our Speed* was a live reading of the 1998 blockbuster film *Speed*, first staged during a shuttle bus journey from New York City to Newburgh, a city two hours upstate. Participating passengers read the parts of the film's characters, including Annie and Jack, originally played by Sandra Bullock and Keanu Reeves. Stage direction and live sound-mixing of the original soundtrack were provided by the artist. Refreshments were made available via mobile sculptures: a rolling suitcase filled with popcorn and a duffel bag outfitted to dispense beverages.

(left)

Movie scripts, passenger name cards, and microphones are placed throughout the shuttle.





**Our Speed**  
Event

Stage directions are read alongside live mixing of the original *Speed* soundtrack.





**Farrington Open**  
Installation-Event  
2018

Farrington Open was an exhibition and open house sponsored by Artist-in-Vacancy, a residency program in Newburgh, New York that provides artists with vacant sites for activation. The artist chose to live for 1 month in nearly renovated, unoccupied townhome on Farrington Street. His period of residence culminated with an exhibition of sculpture and installation that doubled as open house event open to the public. Candelabras made of salvaged materials were installed throughout the second floor of the home.

(left)

Farrington Open: Candelabra 4

Coaxial cables, cable splitter, telescoping antennas, candles





**Farrington Open: Epilogue**

Installation-Event

2018

*Epilogue* featured a translucent screen installed within an opening between the kitchen and living room of a vacant suburban home. The subtitles of a popular dystopian television program were projected onto the screen continuously without image or sound.





**Epilogue**  
Installation-Event





### **Stephen**

Performance-Installation  
2016

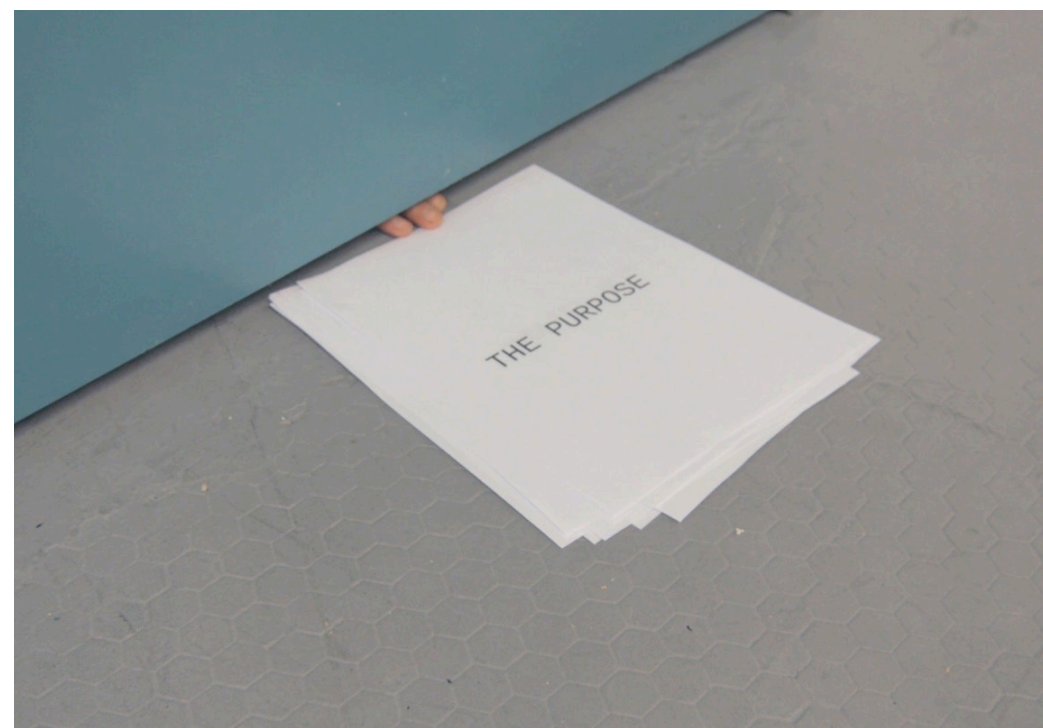
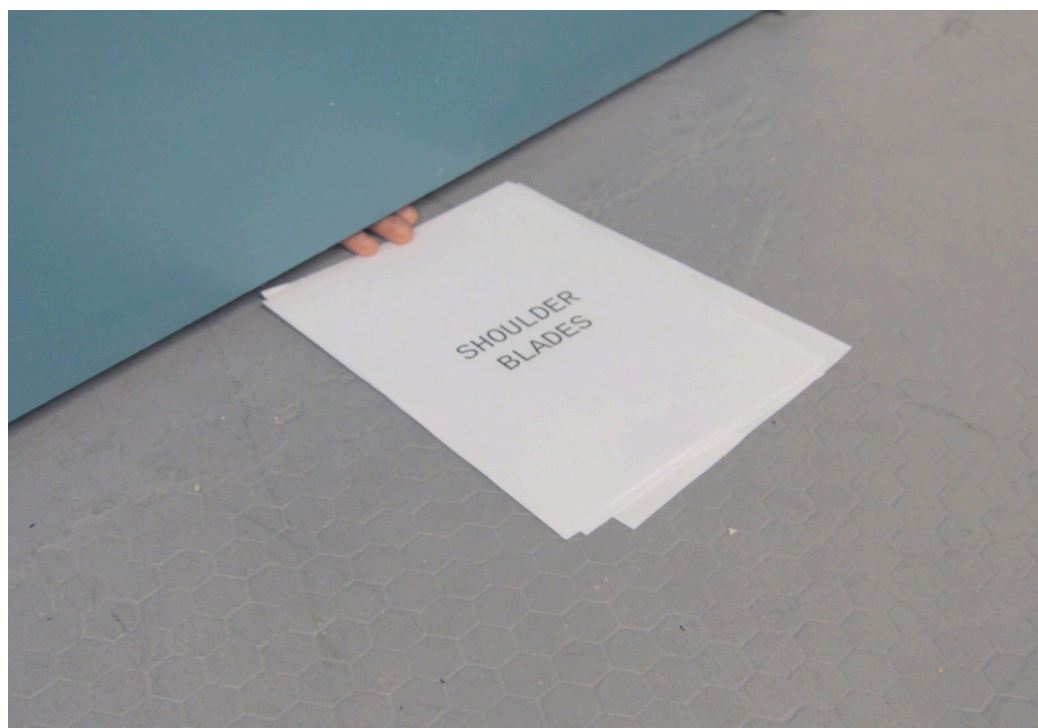
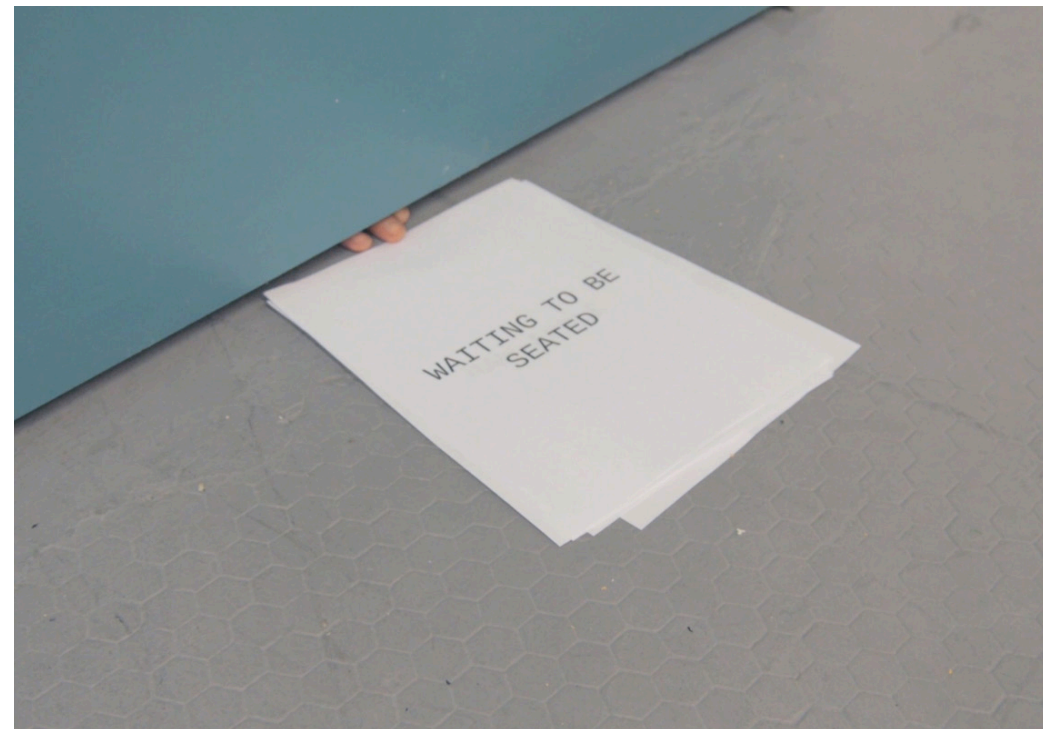
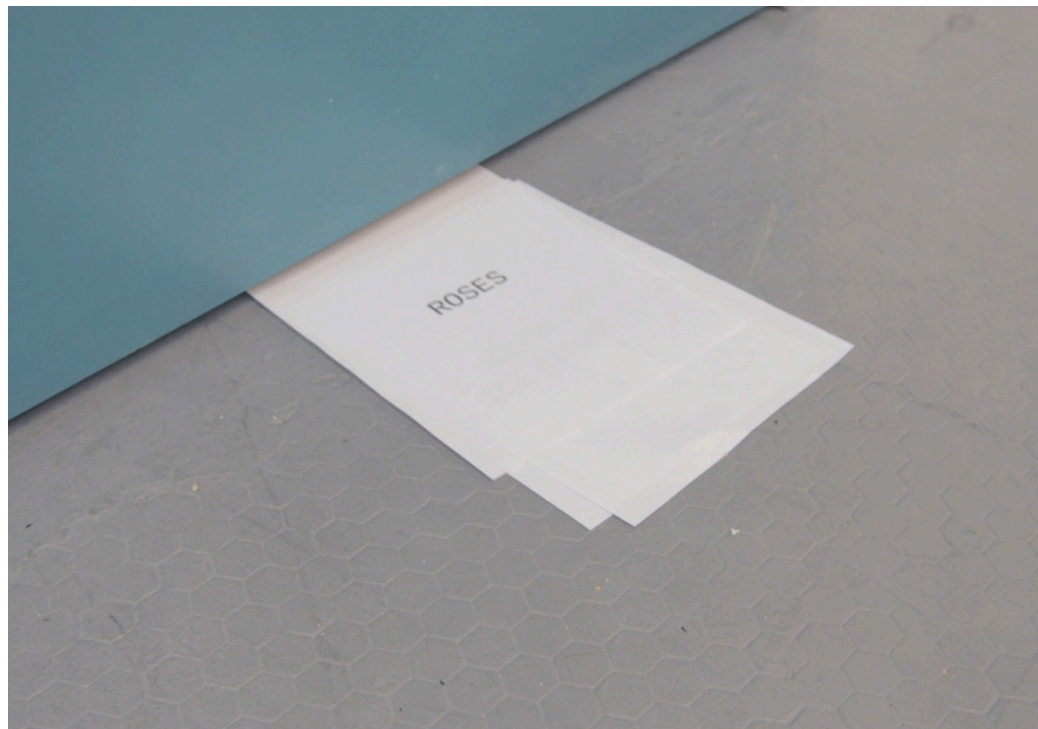
*Stephen* is an installation featuring a Yamaha MX-49 keyboard, programmed so that each key plays a phrase recorded in the artist's voice. Phrases such as "in North London", "I am", "waiting for them", and "with grace" compose a broken and deconstructed poem. Underlying each key is a violin tone. As the audience plays the keyboard, sentiments, storylines, confessions, and observations are woven together. View video documentation: [vimeo.com/180717861](https://vimeo.com/180717861)





**Stephen**  
Performance-Installation





**The Floor**  
Performance-Installation  
2014, 2016, 2018

View performance for camera: [vimeo.com/90709382](https://vimeo.com/90709382)





**Edward Van Harmelen**

Event  
2014

*Edward Van Harmelen* was a performance event equal parts lecture hall, techno rave, and exhibition center. Underlying connections between the various media presented were uncovered by an audience as they alternated between dancing and processing information.

View video documentation: [vimeo.com/111140623](https://vimeo.com/111140623)

(left)

Objects on display: a strobe light flashing in its own box





**Edward Van Harmelen**  
Event  
2014

Audience members read over the shoulder of a performer as she translates English to Dutch.  
In the background, a large found portrait of an unknown woman watches over the space.





### **Recreational Meeting**

Event  
2013

*Recreational Meeting* is an exercise-driven, 45 minute meeting utilizing various elements of conference rooms. Audience members are polled for their opinions on increasingly absurdist statements, read poetry in unison, attempt escape, take a nap, and discover objects hidden in office furniture. View excerpt of performance: [vimeo.com/71349428](https://vimeo.com/71349428)

(left)

Audience members uncover objects hidden throughout the meeting room





**Recreational Meeting**  
Event  
2013

Audience members read a poem printed on the inverse of an landscape image